

ERSASCOPE M plus



ERSASCOPE M

Ersa ERSASCOPE M & Ersa ERSASCOPE M plus

Optical inspection systems for hidden solder joints.

The ERSASCOPE M and M plus are multi-purpose inspection video microscopes to analyze hidden solder joints in electronic production environments including measurements of solder joints on Ball Grid Array (BGA) and many other SMT packages. Their application field covers the visual inspection of components on printed circuit boards in Surface Mount Technology (SMT) or Through-Hole Technology (THT) in general, but also the visual inspection of PCB lands or solder paste prints. The devices can be used in quality assurance, production, laboratories, or R&D departments.

The compact ERSASCOPE M units connect with a PC or laptop via a USB interface, and within minutes they are ready for operation. Thanks to high-quality BGA optical heads, the inspection of components with hidden solder joints is easy. A MACROZOOM lens allows top-view surface inspection in various magnifications. All optical heads are plugged onto the high-resolution digital color camera hand piece which makes changing the optical heads in accordance to the inspection task a matter of seconds.

Long-life dimmable LED lights are integrated in the optical heads and provide optimal illumination of the solder joints. The ERSASCOPE M is equipped with an additional LED brush light for BGA inspection. It is essential for backlight illumination or to light up very hidden and hard to reach areas. The ERSASCOPE M plus includes a powerful external LED light source plus gooseneck light fibres as well as a light brush for optimized illumination conditions.

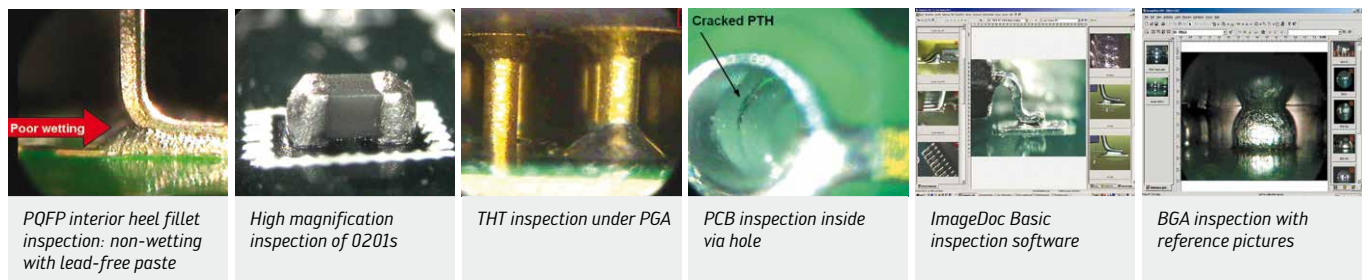
Both systems come with the ImageDoc inspection software. This proven and well-established software not only displays the live images, but also offers the operator various possibilities for documentation and analysis of the inspection results.

Technische Highlights:

- High-resolution 5 MP USB camera
- Interchangeable high-quality lenses
- Multifunctional tripod and X-Y table with rotation for difficult inspections
- Completely ESD safe
- Including ImageDoc Basic software

Technical Data:

Order No.	Description	Technical Data	Part	ERSASCOPE M	ERSASCOPE M plus
0VSST080	Stand with Z-axis micrometer adjustment; integrated fibre optics and camera cables	W x H x D: ~ 500 x 400 x 520 mm Total weight ~ 5 kg Antistatic surface, includes 1,000 mm coated fibre optic cable with gooseneck		X	X
0VSCA060	Basic camera unit, digital	1/3" N-MOS solid state color image sensor 2,592 (H) x 1,944 (V) pixels (5.0 MP), USB 2.0 interface L x W x H: 114 x 36 x 51 mm (without cable)		X	X
0VSSE060-90K	BGA lens, 90° optical head for BGA inspection, pitch 1.27 mm	Magnification: 5x up to 280x Focusing range: 0.5 mm up to 100 mm Field of view (FoV): 1.2 up to 50 mm Footprint: 0.8 x 7.1 mm		X	X
0VSSE060-90KS	BGA lens small, 90° optical head for BGA inspection in populated areas, pitch 1.0 mm	Magnification: 25x up to 350x Focusing range: 0.3 up to 40 mm Field of view (FoV): 1.0 up to 20 mm Footprint: 0.8 x 6.0 mm		X	X
0VSSE060-90KUS	BGA lens ultra small, 90° optical head for inspection of ultra-small BGAs or Flip Chips with pitches <1.0 mm in extremely dense populations	Magnification: 25x up to 350x Focusing range: 0.2 up to 40 mm Field of view (FoV): 1.0 up to 20 mm Footprint: 0.4 x 3.4 mm		X	X
0VSSE060-MZ80	MACROZOOM lens 80x, with LED for top-view inspection	Magnification: 8x up to ~80x Focusing range: ~5 mm up to 200 mm Field of view (FoV): ~5 up to 45 mm 43 (L) x 19 (Ø) mm (85 x 35 mm max. incl. telescopic support)		X	X
0VSLS400	Dimmable LED light source Energy-saving LED illumination for all ERSASCOPE inspection systems	W x H x D: 170 x 196 x 98 mm Power consumption: max. 65 W Supply: 12 VDC, 5,420 mA Weight: approx. 2.1 kg		--	X
0VSL200	Fibre optic cable with gooseneck			--	X
0VSLF300	Fibre optic light brush	L 80 mm, W ~10 to ~35 mm		--	X
0VSD300	ImageDoc Basic 3.X inspection software	Standard software package (included in the scope of delivery)		X	X
0VSD300L	ImageDoc EXP 3.X inspection software	Software upgrade to the professional ImageDoc EXP inspection software		Option	Option
0VSLC100	Lens cleaning kit	Cleaning cloth, papers and liquid		X	X
3ZT00214	Cleaning tip (ERSASCOPE)			X	X
0VSLS030	LED brush light	Illumination: 64 x Ø 0.250 mm plastic optical grade fibres, dimensions: Ø 26 x 250 mm (max. 40 x 250 mm)		X	--
0VSY100	X/Y table with fine adjustment , rotatable, incl. 4 support pins for PCBs	Dimensions: Ø 320 mm Weight: approx. 5 kg		X	X



more information on our website or webshop

Ersa GmbH | Germany
Tel. +49 9342 800-0
info@ersa.de
www.ersa.de

France:
kefrance@kurtzersa.com
America:
usa@kurtzersa.com

Mexico:
info-kmx@kurtzersa.de
China:
asia@kurtzersa.com

India:
india@kurtzersa.com
Vietnam:
info-kev@kurtzersa.com