



LIVING CIRCULAR FOAM

Kurtz Protective Solutions.

GLOBAL. AHEAD. SUSTAINABLE.

Sustainable, Award-Winning Technologies



**Main award winner
2020**

With the Bavarian Energy Award, the Free State of Bavaria honors outstanding achievements around the topic "Energy" every two years. In addition to an award in the category "Energy Efficiency in Industrial Processes and Production as well as Energy Efficiency Networks", Kurtz also received the main prize from a total of eight categories.



**Winner of the
2020 Recycling Award**

The Recycling Award recognizes outstanding achievements and new processes in EPS recycling. The award raises awareness for good recyclability of polystyrene. Kurtz's contribution with its RF technology is a powerful example of innovation in EPS recycling.



**Winner in the category
"Environmentally Friendly
Technologies"**

In 2022 RF technology was honored by the German Federal Ministry for Economic Affairs and Climate Action (BMWK) with the German Innovation Award for Climate and Environment. The BMWK honors innovative technologies, processes, products, services, and business models that show new ways in the field of climate and environmental protection.



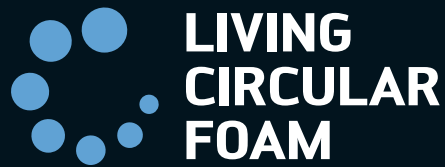
**Kurtz Ersa receives
bronze in ESG rating**

The ESG rating measures the voluntary contribution of companies to sustainable development that goes beyond legal requirements. For Kurtz Ersa it was a further step on the way to becoming a sustainable company. In the first ESG rating, Kurtz Ersa achieved a bronze medal at the first attempt. The rating of the category "environment" was better than in the industry.



**A group initiative for more
sustainable operations**

Kurtz Ersa launched a broad-based sustainability initiative in 2020. Under the label "GoGreen250", processes were initiated in all company divisions to act more sustainably. It is about sustainable development, procurement, production, sales, business, and life. With the GoGreen250 initiative, the Kurtz Ersa corporation and its employees are demonstrating their commitment to climate protection.



Shape Mouldings Production for Circular Economy

Specialists predict that long periods of drought will no longer be a rarity. Natural resources, above all water, are becoming scarcer. Our most valuable commodity must be used in a targeted and economical manner. Processes such as Kurtz Ersa's radio frequency (RF) process are becoming indispensable for the industry. They not only reduce the consumption of process water and the emission of CO₂, but also enable the use of biomaterials and material with a high recycling content. With our technologies, we help close the loop on plastics. Megatrends such as circular economy, digitization and Industry 4.0 remain and increasingly demand manufacturing processes that offer even greater flexibility and efficiency. Process optimization, automation, the use of remote services, the appropriate infrastructure and a closed recycling loop are playing an increasingly important role. Kurtz Ersa offers intelligent software solutions, attractive service packages, maintenance training as well as attractive upgrades for your plants. All with the overriding goal of supporting climate protection and still allowing your production to be economical.

17 Kurtz Ersa locations nationally and abroad advise and support you with comprehensive process know-how and raise the productivity of your production to a more efficient and sustainable level. Our teams work together across departments and countries and develop or modernize individual machines for you or plan the production process of your entire plant.

Closed Loop

Recycling of Particle Foams

Sustainable end products in the plastics industry that can be used for a closed loop economy are increasingly important. Kurtz Erşa offers its customers the possibilities for a more sustainable production. With the Kurtz WAVE FOAMER, the experienced Kurtz engineers at the group-owned development and technology center have succeeded in meeting this need for more sustainable manufacturing processes. As an innovation driver in the particle foam sector, we enable processing for a growing number of recyclable materials and sustainable raw materials on Kurtz machines.

 **LIVING
CIRCULAR
FOAM**



Particle Foam – Smart and Safe

Wide Range of Applications

Particle foams are not only contained in many products, but they also protect in many life situations: The head of the cyclist and motorcyclist, the electrical appliance during transport from the manufacturer to the customer's home, the motorist in the event of an accident, food from spoilage and damage, the house from severe heating or cooling ...

Construction industry



Food industry



Sports



Packaging industry



Automobile industry



Leisure





Radio Frequency Technology

Sustainable Steamless Process Technology

The Kurtz WAVE FOAMER shape moulding machine processes with electrical energy and completely without the use of steam. In addition to processing conventional particle foams, the radio frequency process is also ideally suited for the use of biomaterials. This results in novel and sustainable packaging. With RF technology, a higher percentage of recycled material can be reprocessed than ever before. In the EPS shape moulding, for example, it is up to 100 %.

- Energy savings of up to 90 %
- CO₂ footprint improved by up to 70 %
- Fusion from inside to outside
- Production of shape mouldings with high recycled material content
- Ideal for high densities, for example EPS with over 150 g/l
- No complex media installation; steam generation plants and cooling tower installation not required

»Kurtz's radio frequency technology offers you the chance to align your shape mouldings production in a sustainable and climate-friendly way.«



**up to 90 %
energy savings**



**up to 100 %
recycling rate**



**up to 70 %
CO₂ reduction**



**100 % suitable
for biomaterials**



**100 %
steam savings**



**90 – 100 %
water savings**

»Based on variothermal mould temperature control, the THERMO SELECT process offers a method to produce visually appealing shape mouldings without bead structure for applications in the visible range.«



**Very good
thermal insulation**



**High energy
absorption**



**High structural
strength at
low weight**



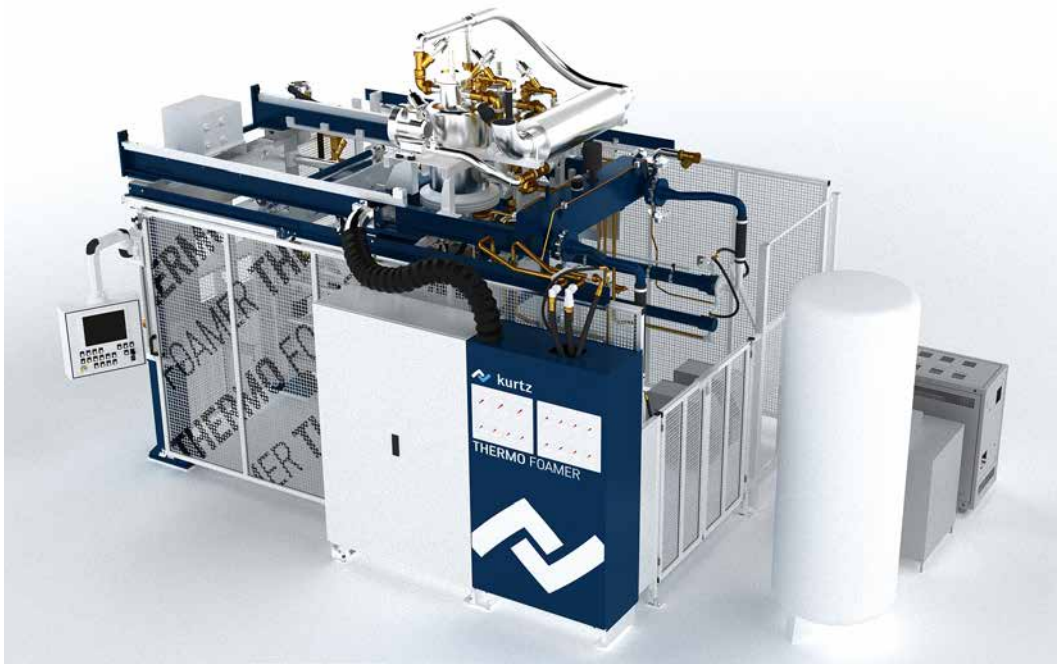
**Minimal steam
consumption,
reduced mould volume**



**EPP fully
recyclable**



**Cost
reduction**

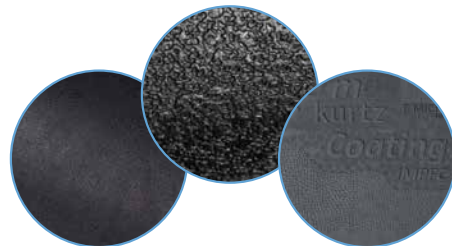


Thermo Coating

Injection Moulding meets Particle Foam

One of the biggest challenges of particle foam shape mouldings for visible applications is the unappealing appearance of the surface. With our technology, this hurdle can be overcome. The basis is the Kurtz THERMO SELECT process with closed cooling system and thus considerably reduced water consumption. The variothermal mould temperature control enables the processing without direct water cooling. The THERMO COATING/IMPFC process is the add-on. Combined with it, closed, smooth, structured and thus injection moulding-like surfaces are produced for particle foam components. These are consequently solid, but nevertheless very light.

- Visually attractive shape moulding surface with structure and/or texturing, pleasant haptics
- Homogeneous temperature distribution in the part via variothermal mould temperature control – precise EPP shape mouldings
- Significantly reduced infrastructure – Plug'n Play installation





Global Solutions for
Local Demands

Kurtz Services

Intelligent solutions for innovative companies – we support our customers' global activities with a worldwide service network. We actively work to ensure that malfunctions or machine downtimes do not occur in the first place or are quickly remedied. To this end, we offer comprehensive training packages for the operation, maintenance, repair, and process optimization of our machines. Secure decisive competitive advantages – with maximum system availability and process control.

- Attractive service contracts
- Individual control upgrades
- Maintenance training and remote maintenance

*»Ideas put into shape:
Intelligent service solutions
for innovative companies.«*



**24/7
reachability**



**Global
availability**



**Operating
costs analysis**



**Production site
assessment**



**Spare parts
supply**



**Remote
service**

*»Technologically
future-proof thanks to
Kurtz Ersa CONNECT.«*



Intelligent
ticket system



Connect
remote service



E-learning



Machine
monitoring



Digital machine
database



Board carrier
tracing

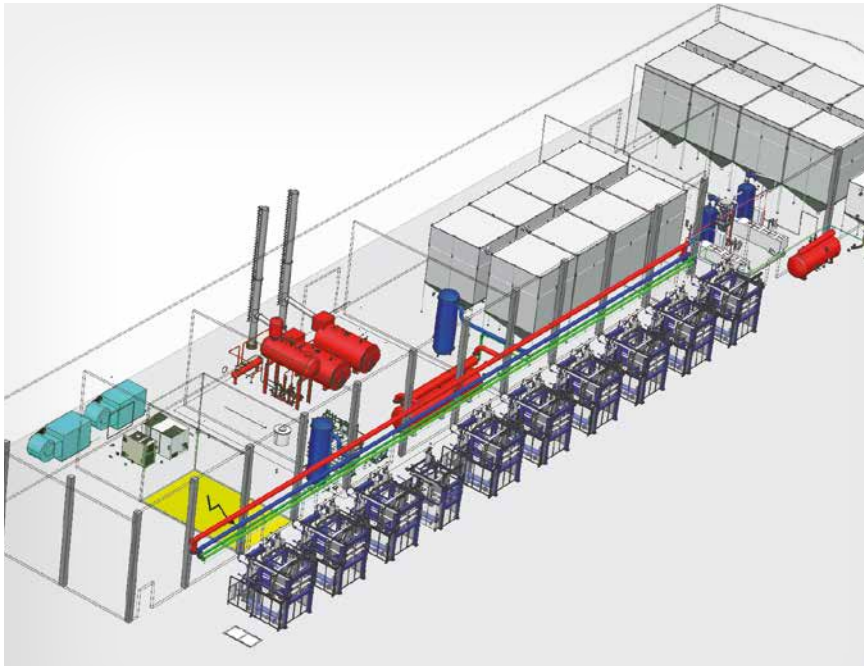


Kurtz Ersa CONNECT

Added Value through Digitization

Kurtz Ersa CONNECT consists of an integrated hardware and software infrastructure available for the entire Kurtz Ersa machine portfolio. Standardized interfaces and systems as well as an availability for web browser and smartphones make the platform strikingly user-friendly and a must-have for your production. With the Kurtz Ersa CONNECT platform, you score in many directions. You

- acquire important data for process and machine monitoring,
- secure your competitiveness through increased efficiency and better capacity utilization of the overall systems,
- achieve a higher speed of the service processes, reduce machine downtimes, and increase machine availability and,
- have shorter training periods for your staff. Know-how transfer by our experts takes place through integrated digital service and training processes.

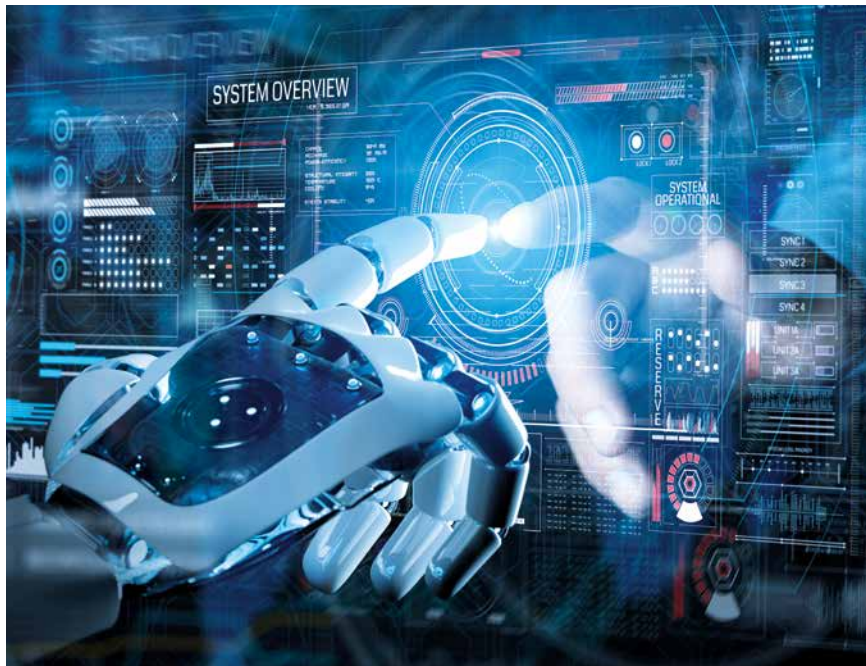


Overall System Competence for
Complete Manufacturing Solutions

Kurtz Turnkey Solutions

Take advantage of Kurtz Ersä's broad expertise in turnkey solutions. Tell us which products you would like to manufacture, and our engineering team will realize complete manufacturing solutions for you with the highest productivity, flexibility, and cost-effectiveness at any desired location in the world. Leading processors have been convinced of the Kurtz performance spectrum for decades. Contact us and secure your advantages in terms of quality, productivity, and reduced costs in your shape mouldings production. Optionally, we offer automation solutions and individual maintenance contracts.

- Advice on suitable foaming process
- Production plant design and calculation
- Worldwide implementation
- Comprehensive service
- Best references



Optimizing Processes,
Reducing Costs.

Kurtz Ersä Automation

The Kurtz Ersä Automation team supports you with advice during the inquiry, constructively in the development phase and customer-oriented during commissioning. Kurtz Ersä automation solutions set high-quality standards across the entire process chain, always considering individual customer requirements. Our handling and automation systems help to release rationalization potentials and guarantee a short ROI. We have also successfully implemented exciting large-scale projects, for example for a long-standing customer in the food packaging industry. By means of a fully automatic adjustment of the mould in the shape moulding machine, the customer is able to infinitely adjust the box heights steplessly and to produce fully automatically depending on the production order. Our space-saving robot solution is closely geared to the productivity of the production plant.

- Semi- or fully automatic insertion/removal systems
- Automated quality control and material supply
- Customized material flow concepts



Kurtz GmbH & Co. KG
Frankenstraße 2
97892 Kreuzwertheim
Germany

Phone +49 93 42 8 07-0
info@kurtz.de
www.kurtzrsa.com