



### High efficient, energy saving LED-illumination for all ERSASCOPE inspections systems

Ersa offers a powerful LED-light source for all ERSASCOPE inspection systems. LED-illumination offers a significant benefit for finding soldering problems on hidden solder joints. Improved light conditions increase the ability to detect and identify hidden failures on BGAs or other SMT components.

In comparison to halogen light sources, the LED light source supplies a visibly higher quantity of light and guarantees a constant color temperature (5800 K) over all brightness intensities.

Compared to a high performing metall-halide light source the LED-light source provides the same or even better illumination. At the

same time the absolute power consumption is reduced! The efficiency factor of a LED-light source is better; the heat losses are considerably smaller. LED-illuminants are known to be extremely durable and do not have to be replaced during the device life time in most cases.

The Ersa LED-light source depicts the actual brightness and other functions on a graphical display that is easily operated with a single turn & push button. An implemented preset function allows defining and saving up to ten brightness levels. In addition the device can generate light flashes with its strobe function. A safety switch off function prevents the operator from being blinded

#### Technical highlights

- high efficiency LED-illumination
- minor power consumption
- electronic brightness control
- brightness presets
- safety switch off function

while the optical fiber is disconnected from the device.

The Ersa LED-light source is compatible to all ERSASCOPE systems and is simply retro-fitted by replacing the existing light source at anytime.

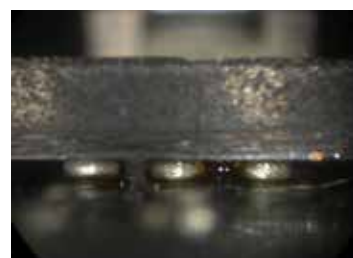
### Halogen vs. LED light source – illumination comparison



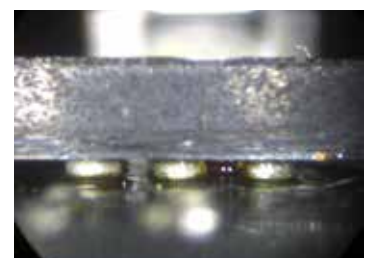
BGA with halogen light source



BGA with LED light source



CSP with halogen light source



CSP with LED light source



ERSASCOPE 1



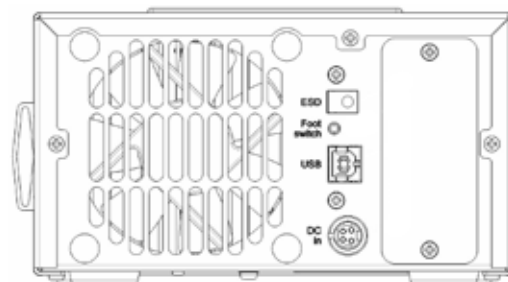
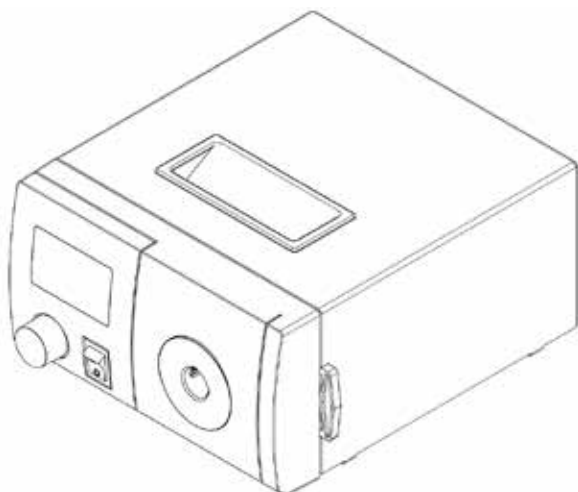
ERSASCOPE 2

### Technical data Ersa LED-light source

LED-light source	Description
Dimensions	approx. 170 x 196 x 98 mm
Weight	approx. 2.1 kg
Colour temperature	approx. 5,800 K $\pm$ 5 %
Life time L70	approx. 30,000 h (70 % of the initial luminosity)
Supply	12 VDC, 5,420 mA
Power consumption	max. 65 Watt
Light conductor connection	$\varnothing$ 15 mm
Rear connections	ESD socket, DC socket, USB for control by means of PC, Mono jack 2.5 mm for foot switch (peak: signal, rear: mass)
Display	Graphic display for the operation display and comprehensive menu functions

### Ordering information Ersa LED-light source

Order No.	Content
0VSL5400	LED-light source for ERSASCOPE



backside

0214 | Technical data is subject to change. | © by Ersa GmbH